



HipScreen Competency Test

Answer Key



What is the most important radiographic measurement to predict progressive hip displacement in children with cerebral palsy?

- A. Center-edge angle
- B. Pelvic obliquity
- C. Migration Percentage
- D. Acetabular Index

True or false: For a properly position x-ray in a child with hip flexion contractures, pillows should be placed below the legs to prevent the pelvis from tilting forward.

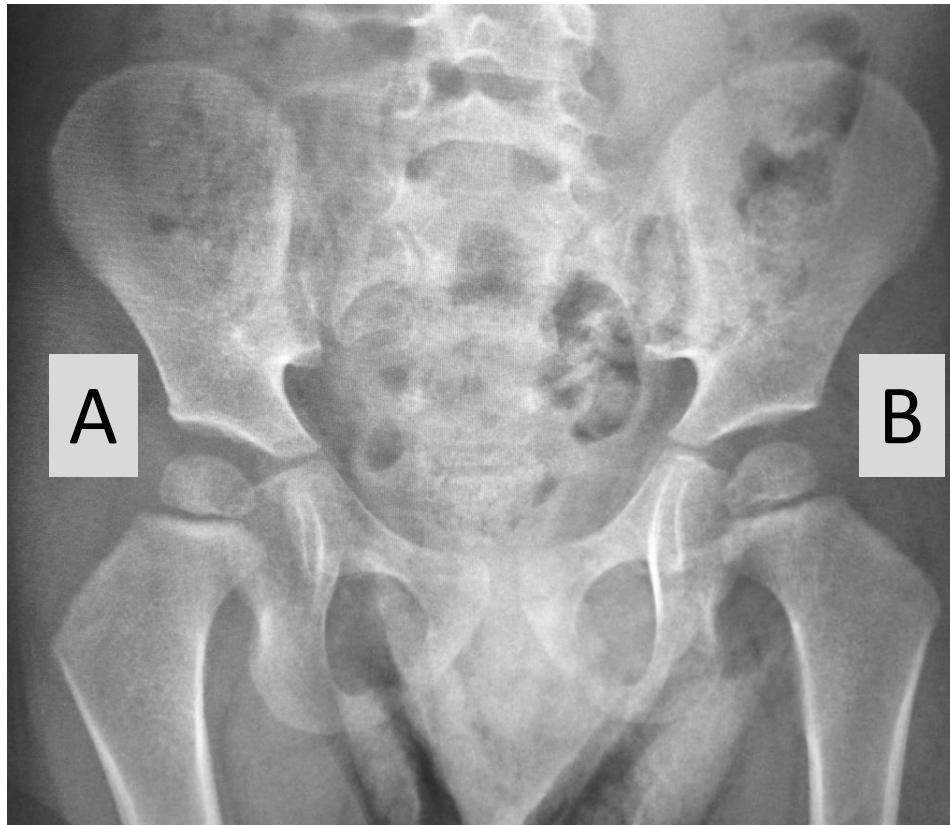
- A. True
- B. False



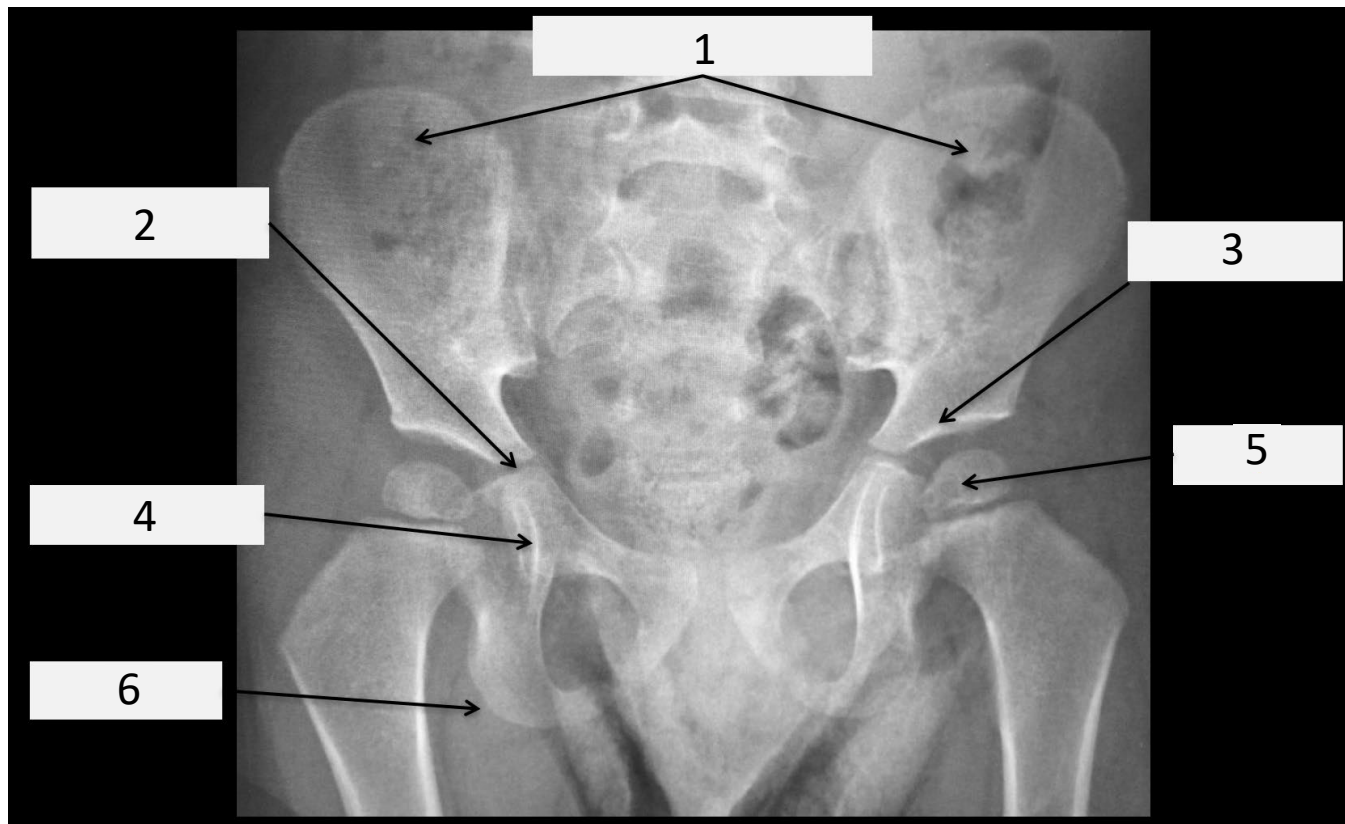
As part of a hip surveillance program, what measurement should prompt a referral to a pediatric orthopaedic surgeon?

- A. Acetabular index greater than 30%
- B. Pelvic obliquity greater than 20%
- C. Center Edge Angle less than 20%
- D. Migration Percentage greater than 30%

In the AP Pelvis x-ray below, which is the child's left hip?



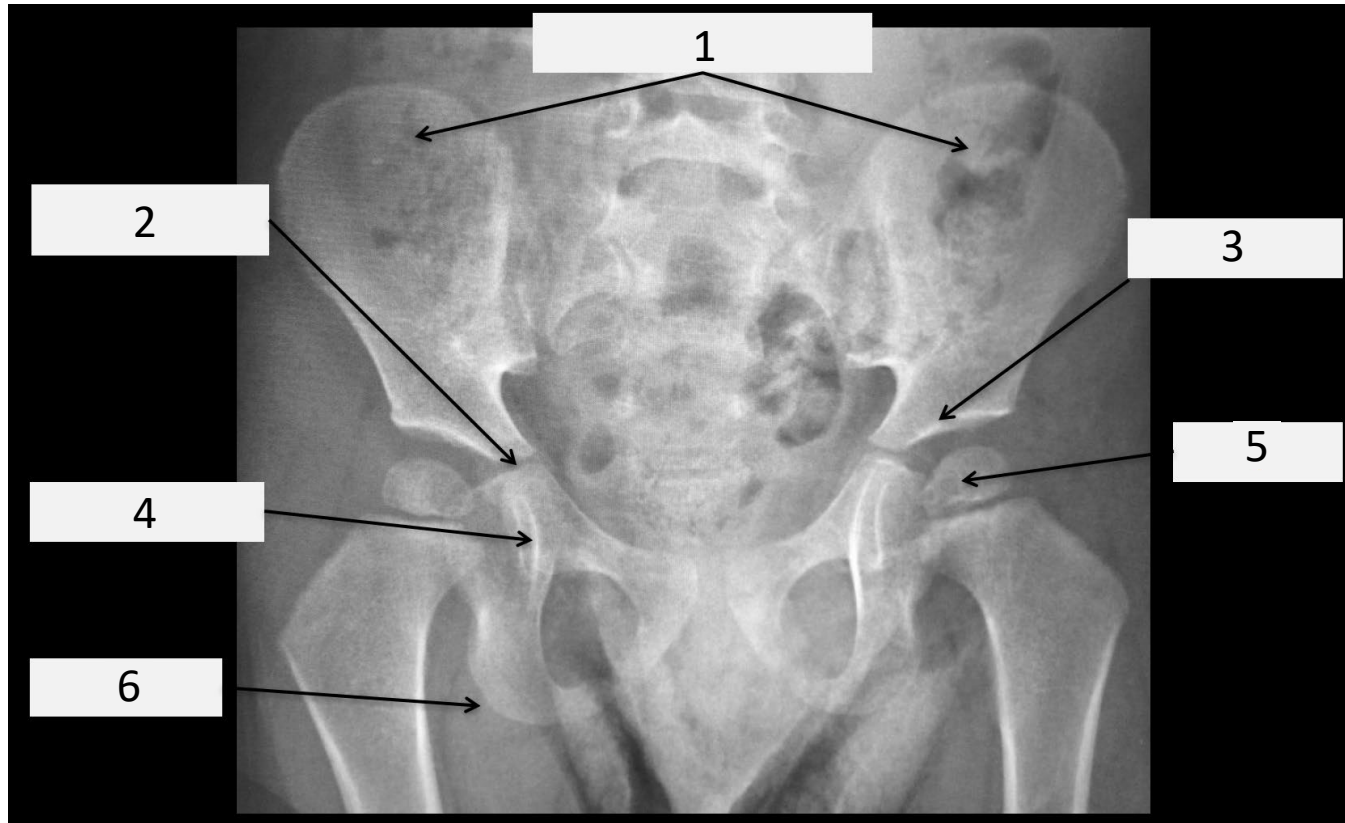
Answer: B



What is the landmark marked by *1*?

- A. Iliac Wing or Iliac Crest
- B. Ischial Tuberosity
- C. Femoral Head Ossific Nucleus
- D. Acetabular Sourcil
- E. Acetabular Teardrop
- F. Tri-Radiate Cartilage

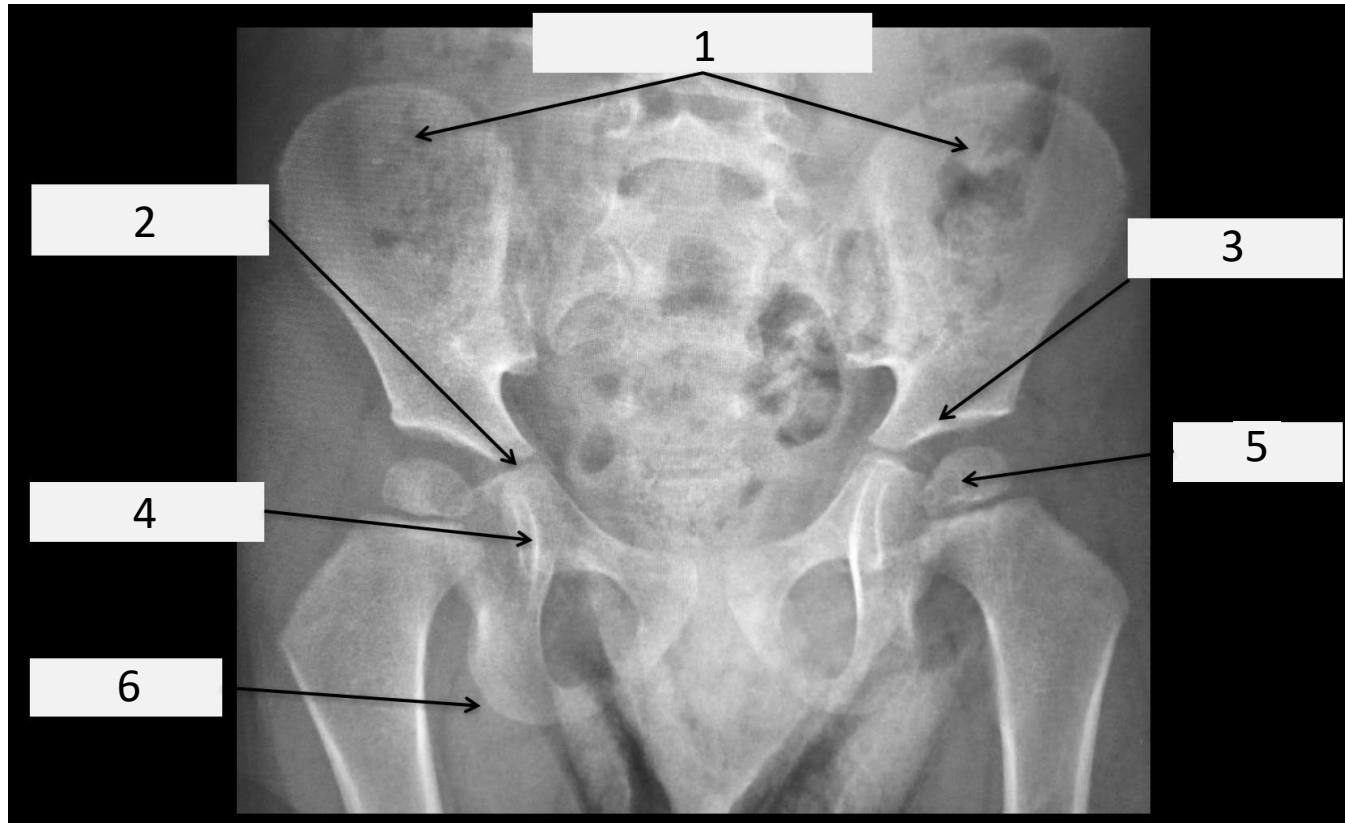
Answer: A



What is the landmark marked by 2?

- A. Iliac Wing or Iliac Crest
- B. Ischial Tuberosity
- C. Femoral Head Ossific Nucleus
- D. Acetabular Sourcil
- E. Acetabular Teardrop
- F. Tri-Radiate Cartilage

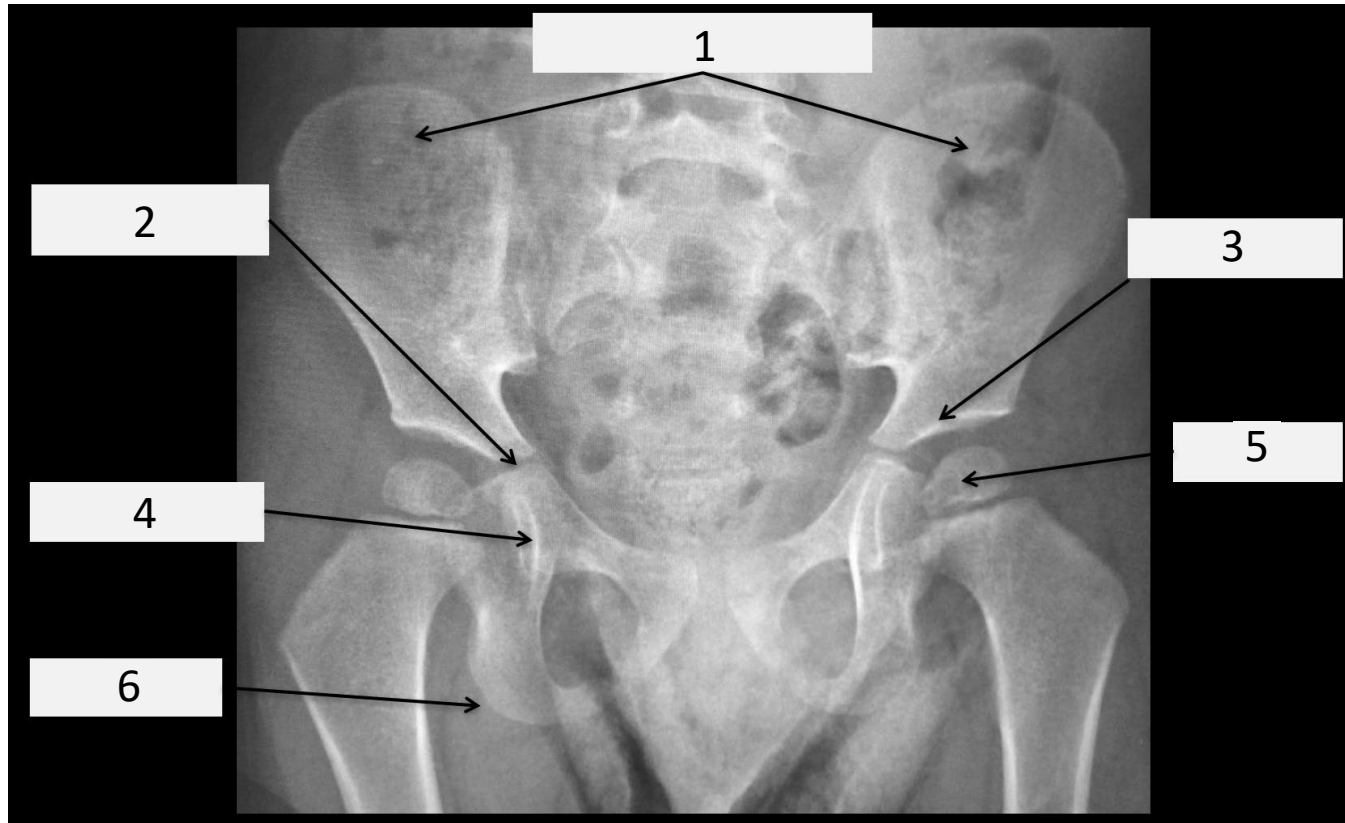
Answer: F



What is the landmark marked by 3?

- A. Iliac Wing or Iliac Crest
- B. Ischial Tuberosity
- C. Femoral Head Ossific Nucleus
- D. Acetabular Sourcil
- E. Acetabular Teardrop
- F. Tri-Radiate Cartilage

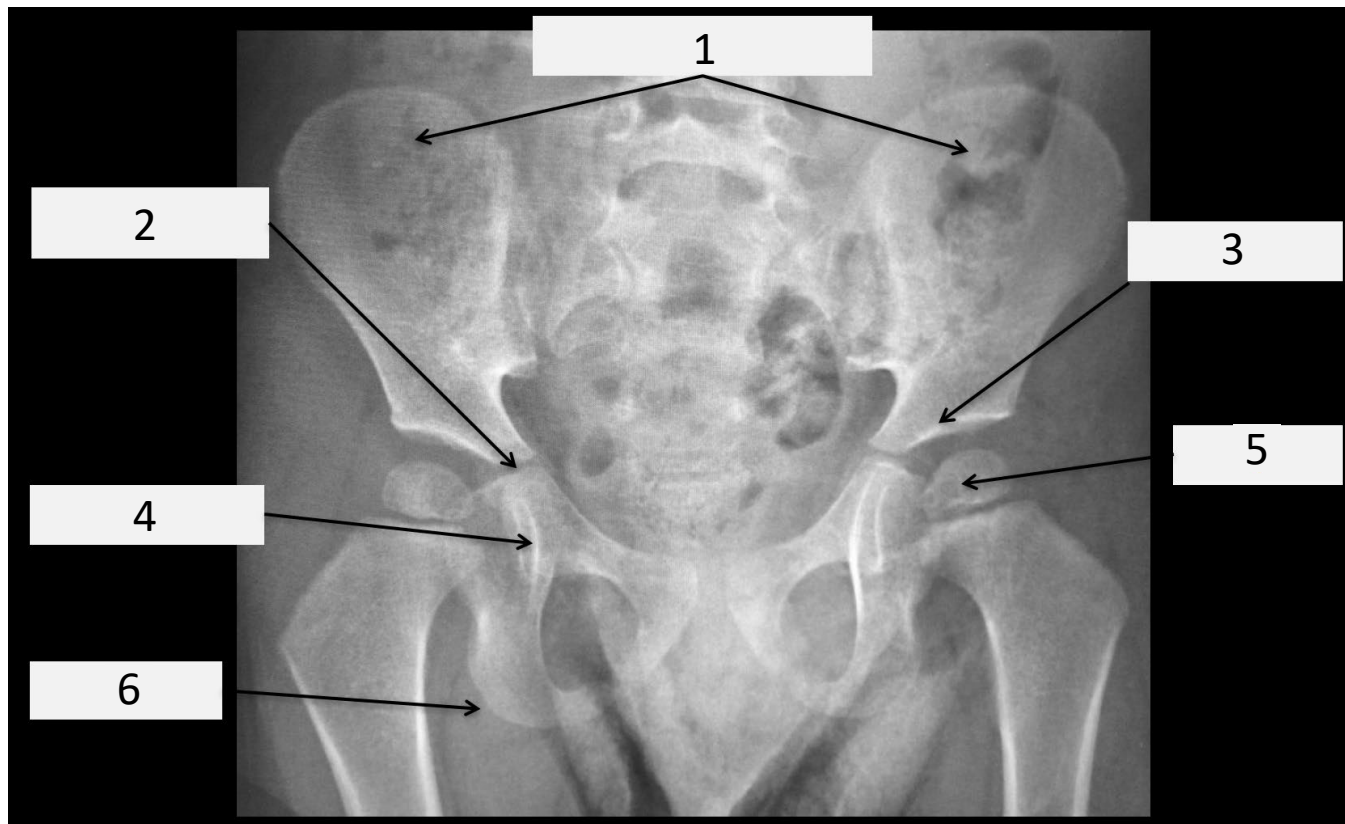
Answer: D



What is the landmark marked by 4?

- A. Iliac Wing or Iliac Crest
- B. Ischial Tuberosity
- C. Femoral Head Ossific Nucleus
- D. Acetabular Sourcil
- E. Acetabular Teardrop
- F. Tri-Radiate Cartilage

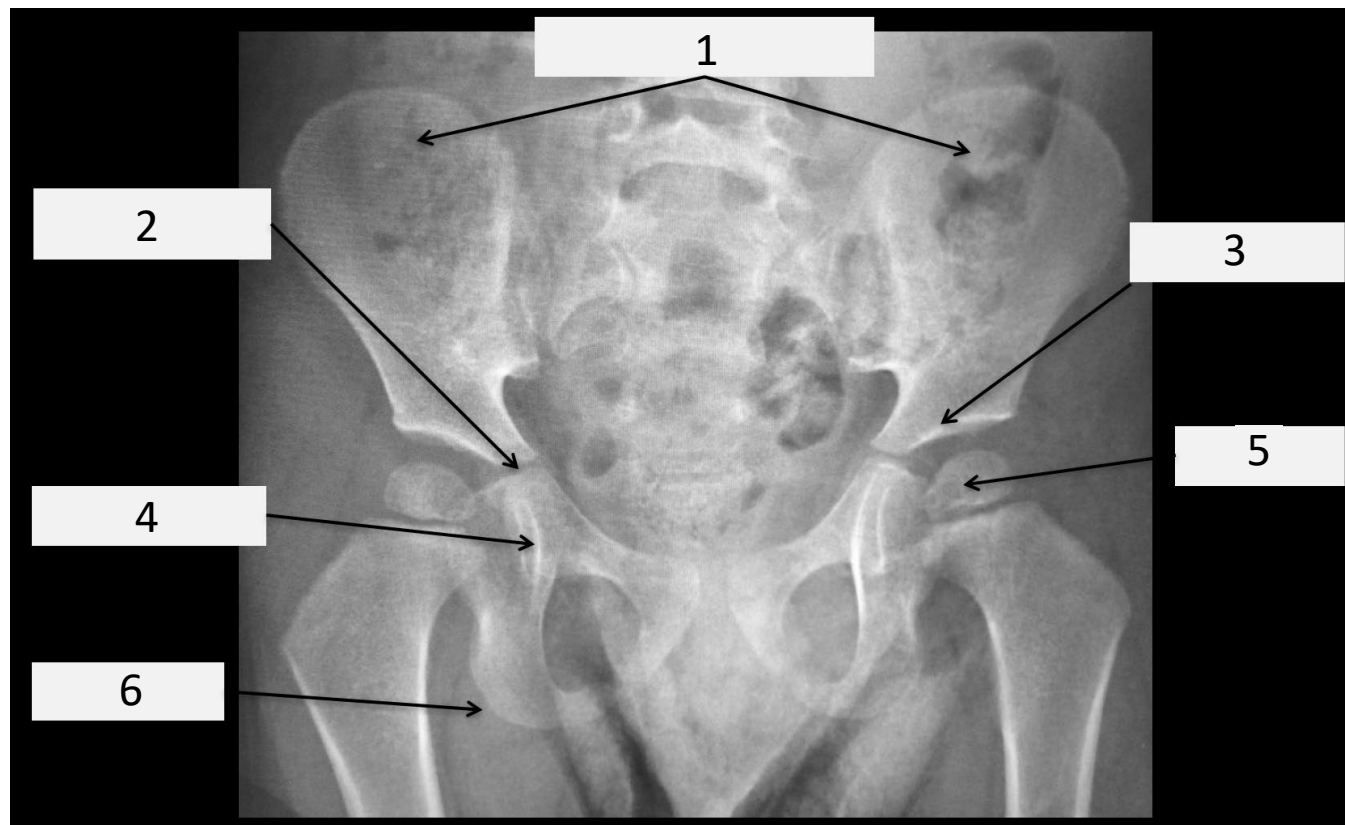
Answer: E



What is the landmark marked by 5?

- A. Iliac Wing or Iliac Crest
- B. Ischial Tuberosity
- C. Femoral Head Ossific Nucleus
- D. Acetabular Sourcil
- E. Acetabular Teardrop
- F. Tri-Radiate Cartilage

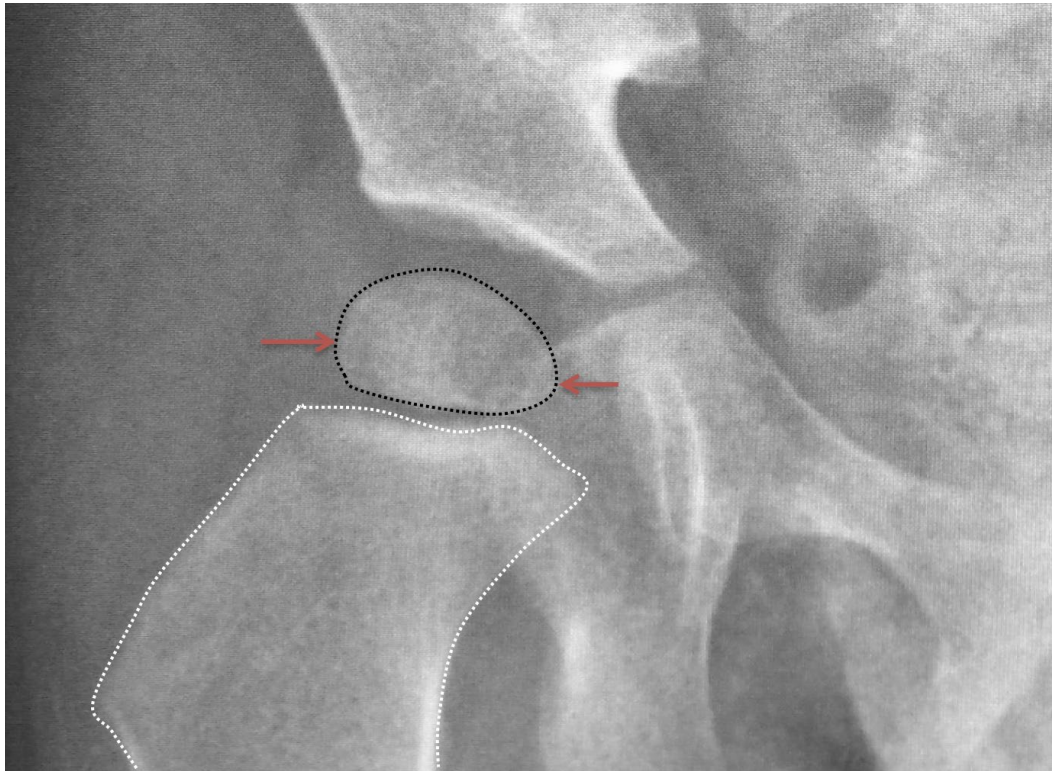
Answer: C



What is the landmark marked by 6?

- A. Iliac Wing or Iliac Crest
- B. Ischial Tuberosity
- C. Femoral Head Ossific Nucleus
- D. Acetabular Sourcil
- E. Acetabular Teardrop
- F. Tri-Radiate Cartilage

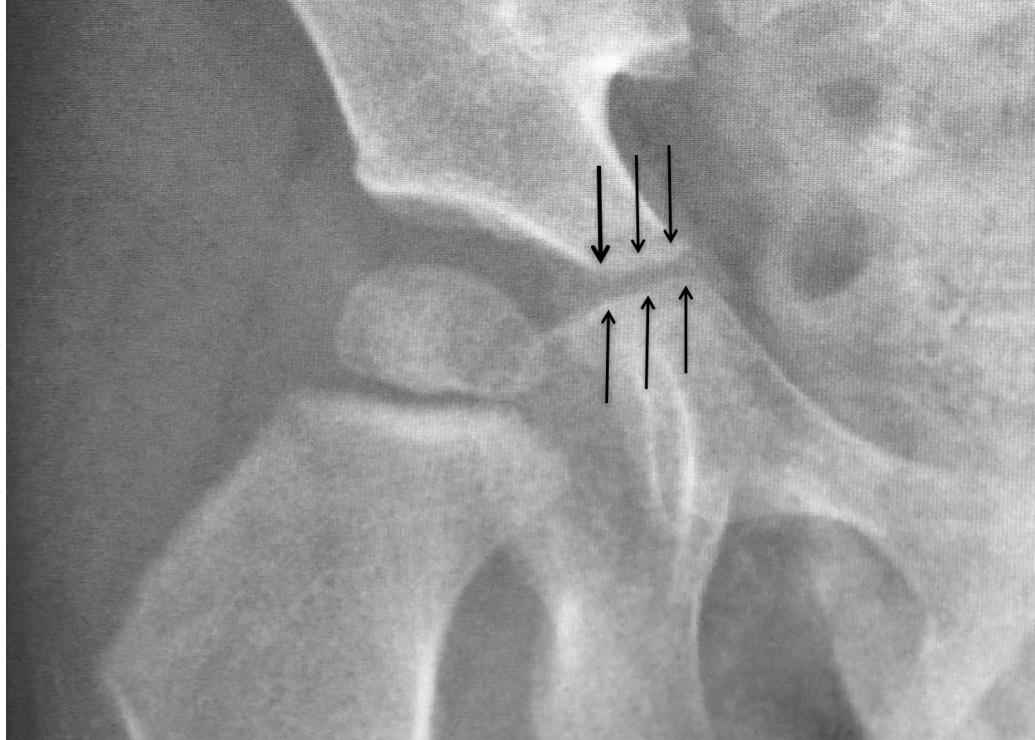
Answer: B



What is the landmark outlined in black dotted lines?

- A. Iliac Wing or Iliac Crest
- B. Ischial Tuberosity
- C. Femoral Head Ossific Nucleus
- D. Acetabular Sourcil
- E. Acetabular Teardrop
- F. Tri-Radiate Cartilage

Answer: C



What is the landmark between the black arrows?

- A. Iliac Wing or Iliac Crest
- B. Ischial Tuberosity
- C. Femoral Head Ossific Nucleus
- D. Acetabular Sourcil
- E. Acetabular Teardrop
- F. Tri-Radiate Cartilage

Answer: F

Which of the following is a properly positioned AP Pelvis for hip surveillance?

A



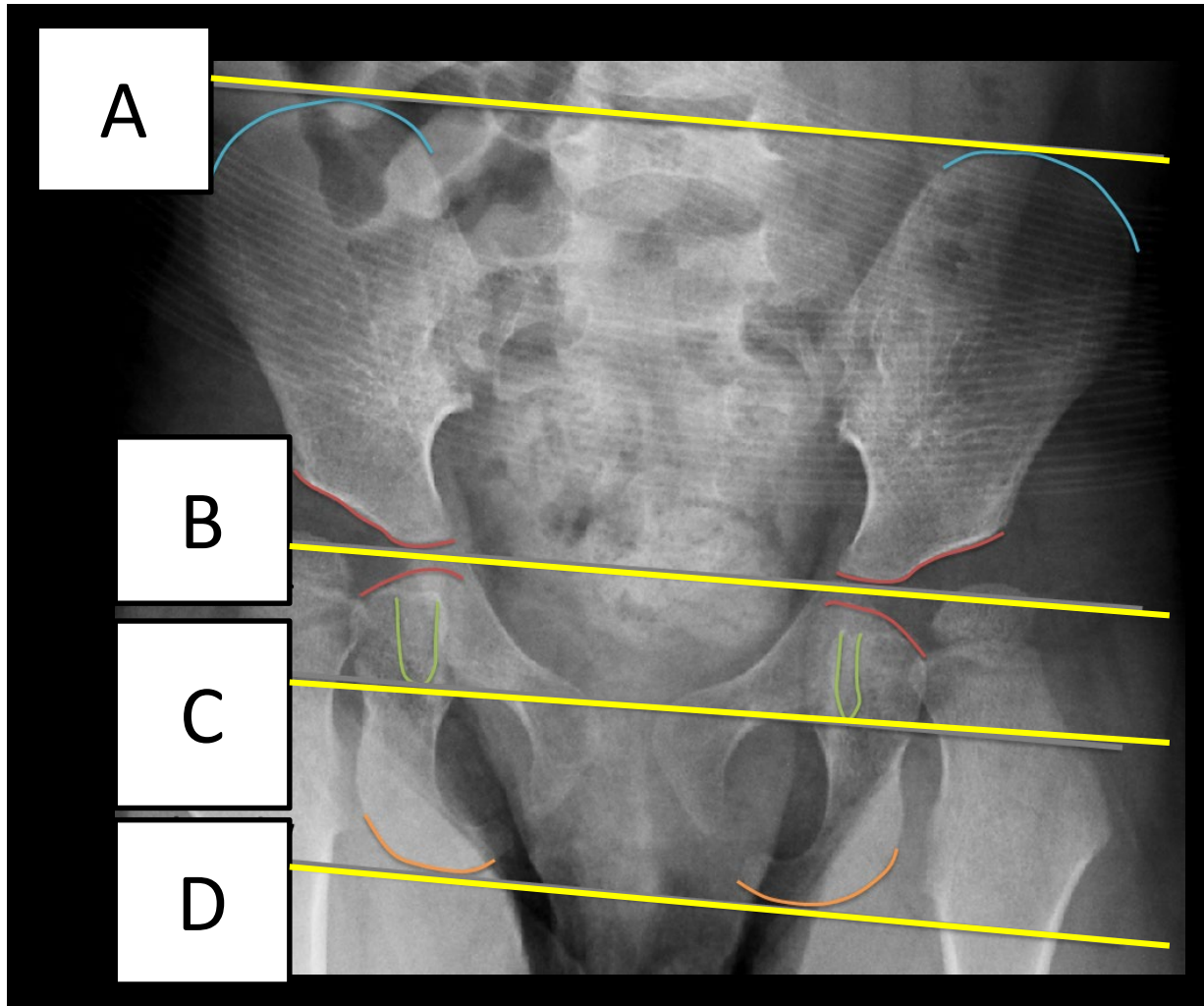
B



C



Answer: B



Which of the following lines will be most accurate for the “H-line” to level the pelvis?

- A.
- B.
- C.
- D.

Answer: B



Which of the following lines best touches the *lateral* aspect of the femoral head ossific nucleus?

- A. Solid Thick White
- B. Dotted Thin White
- C. Solid Thick Black
- D. Dotted Thin Black

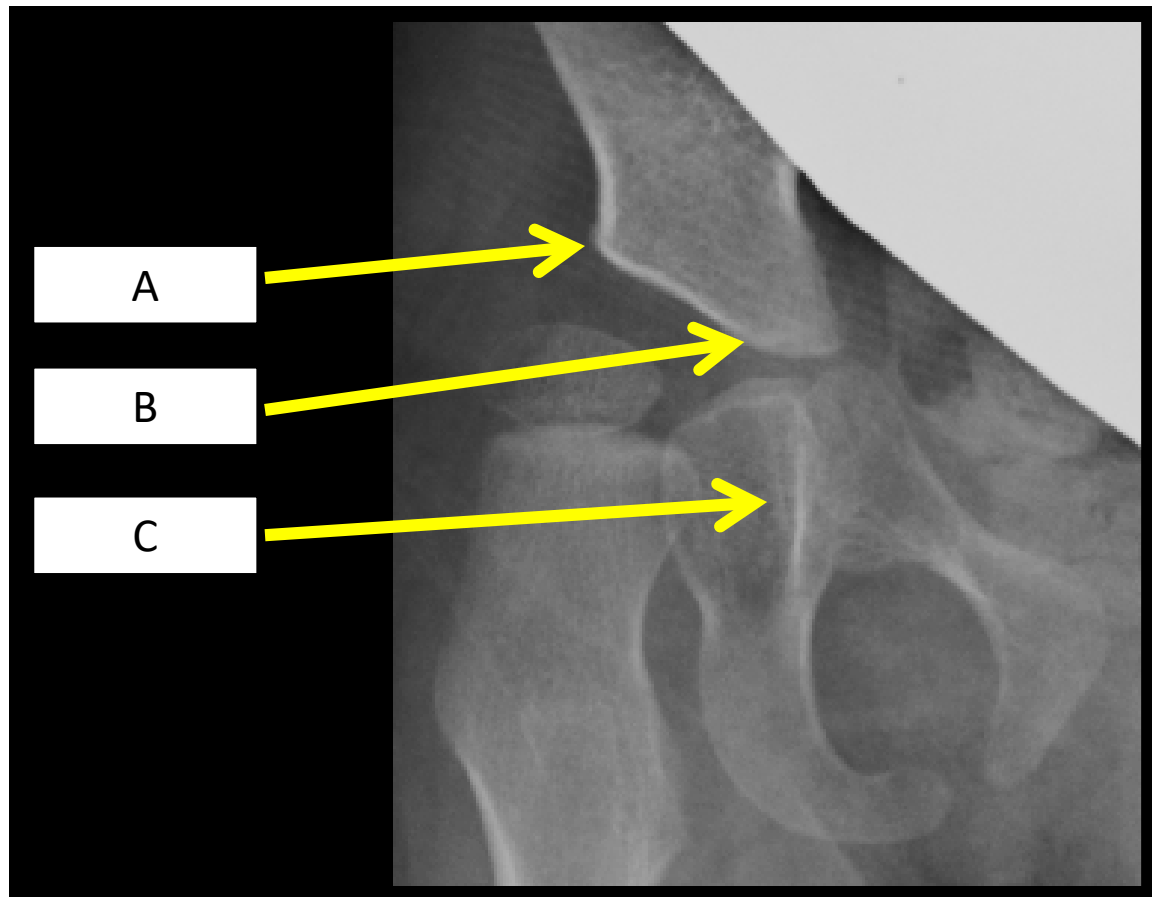
Answer: A



Which of the following lines best touches the *medial* aspect of the femoral head ossific nucleus?

- A. Solid Thick White
- B. Dotted Thin White
- C. Solid Thick Black
- D. Dotted Thin Black

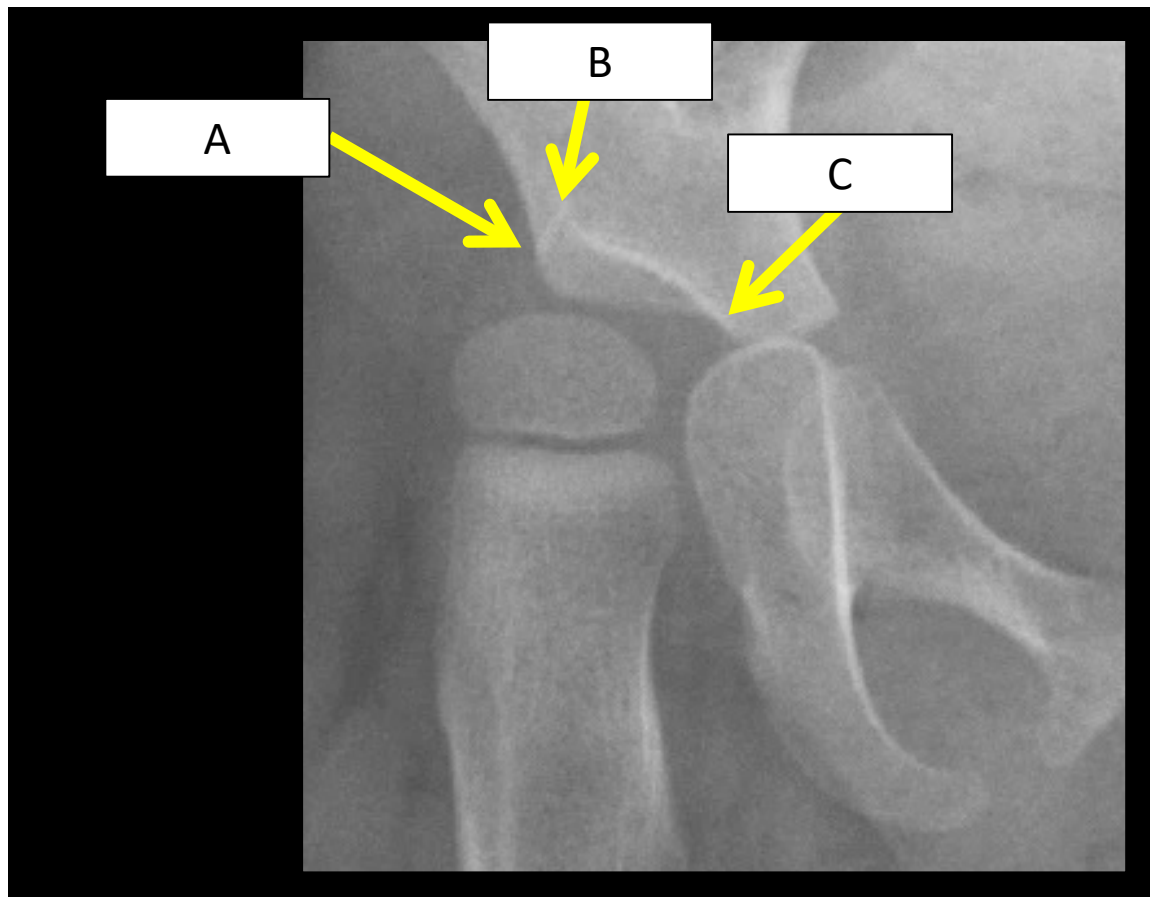
Answer: C



Which arrow points most accurately to the lateral edge of the acetabulum?

- A.
- B.
- C.

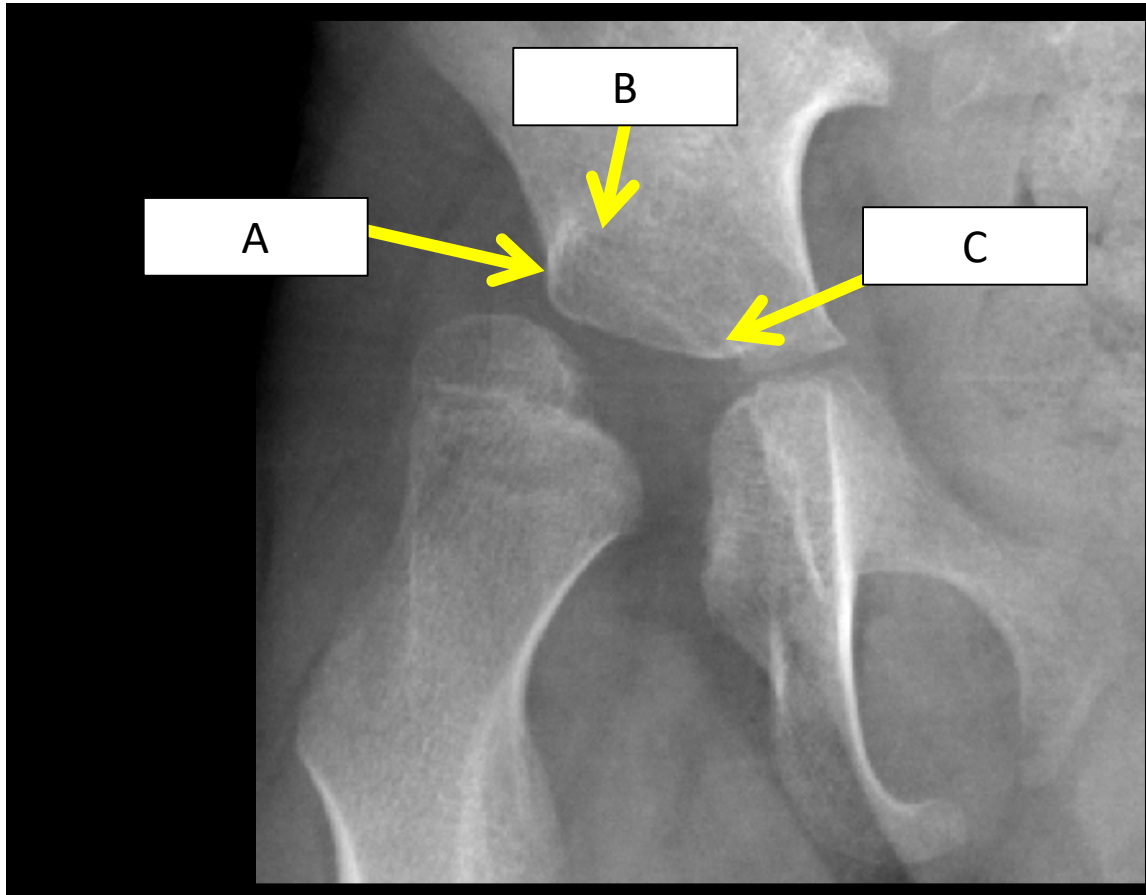
Answer: A



Which arrow points most accurately to the lateral edge of the acetabulum?

- A.
- B.
- C.

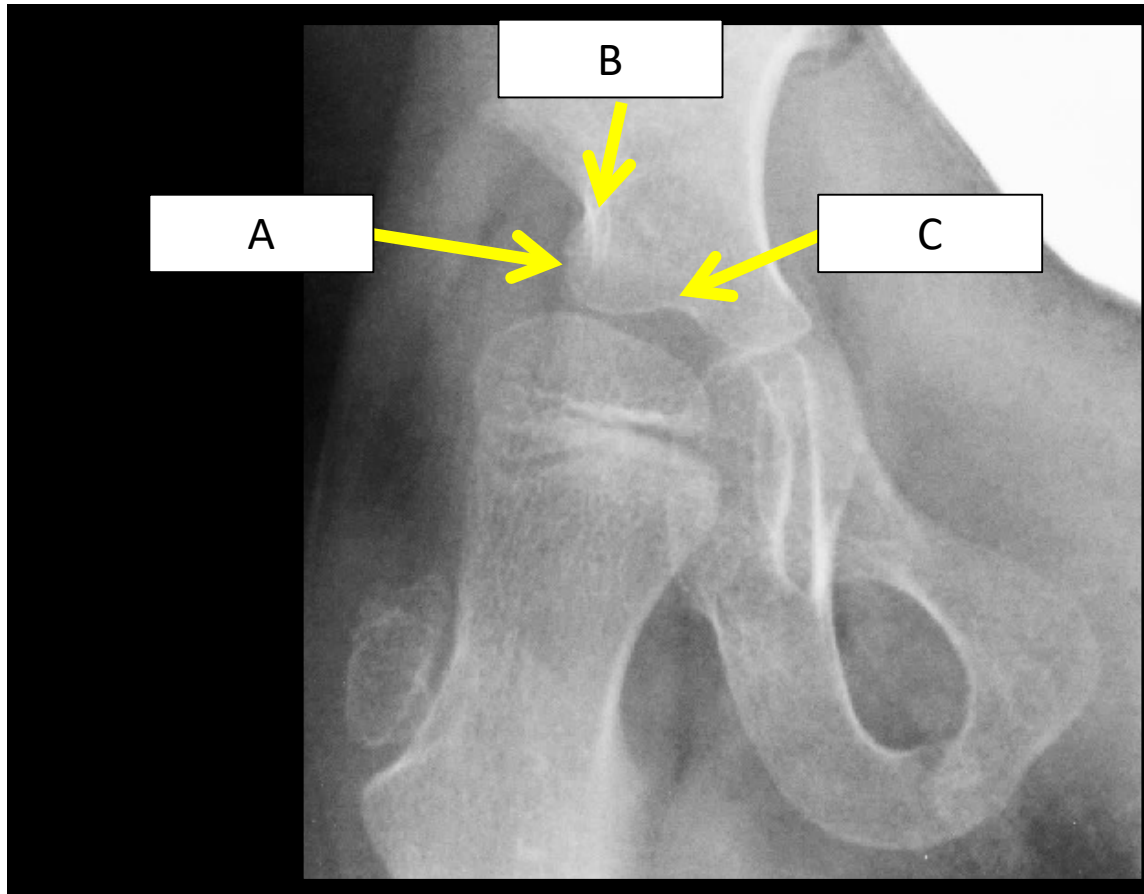
Answer: B



Which arrow points most accurately to the lateral edge of the acetabulum?

- A.
- B.
- C.

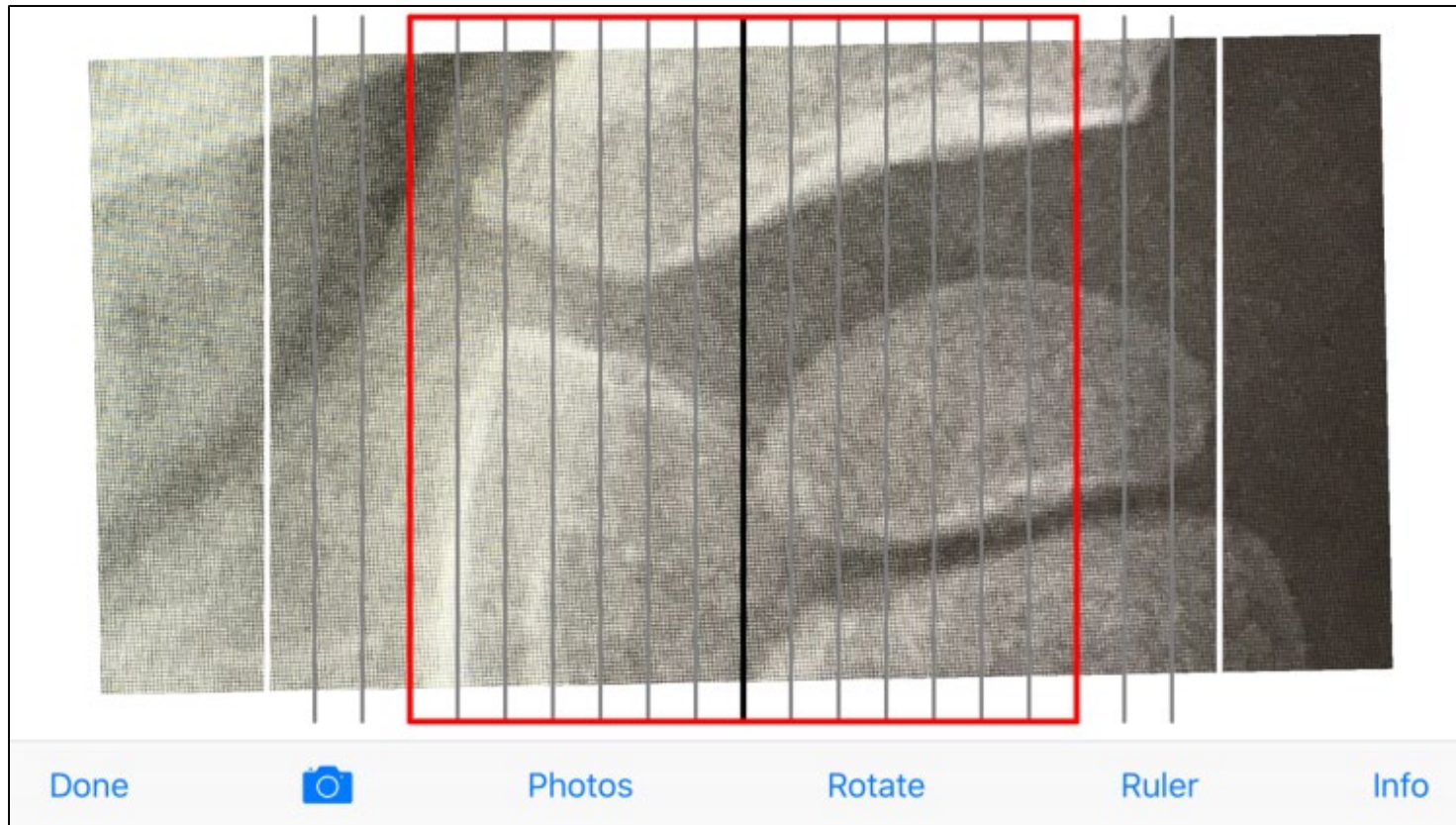
Answer: A



Which arrow points most accurately to the lateral edge of the acetabulum?

- A.
- B.
- C.

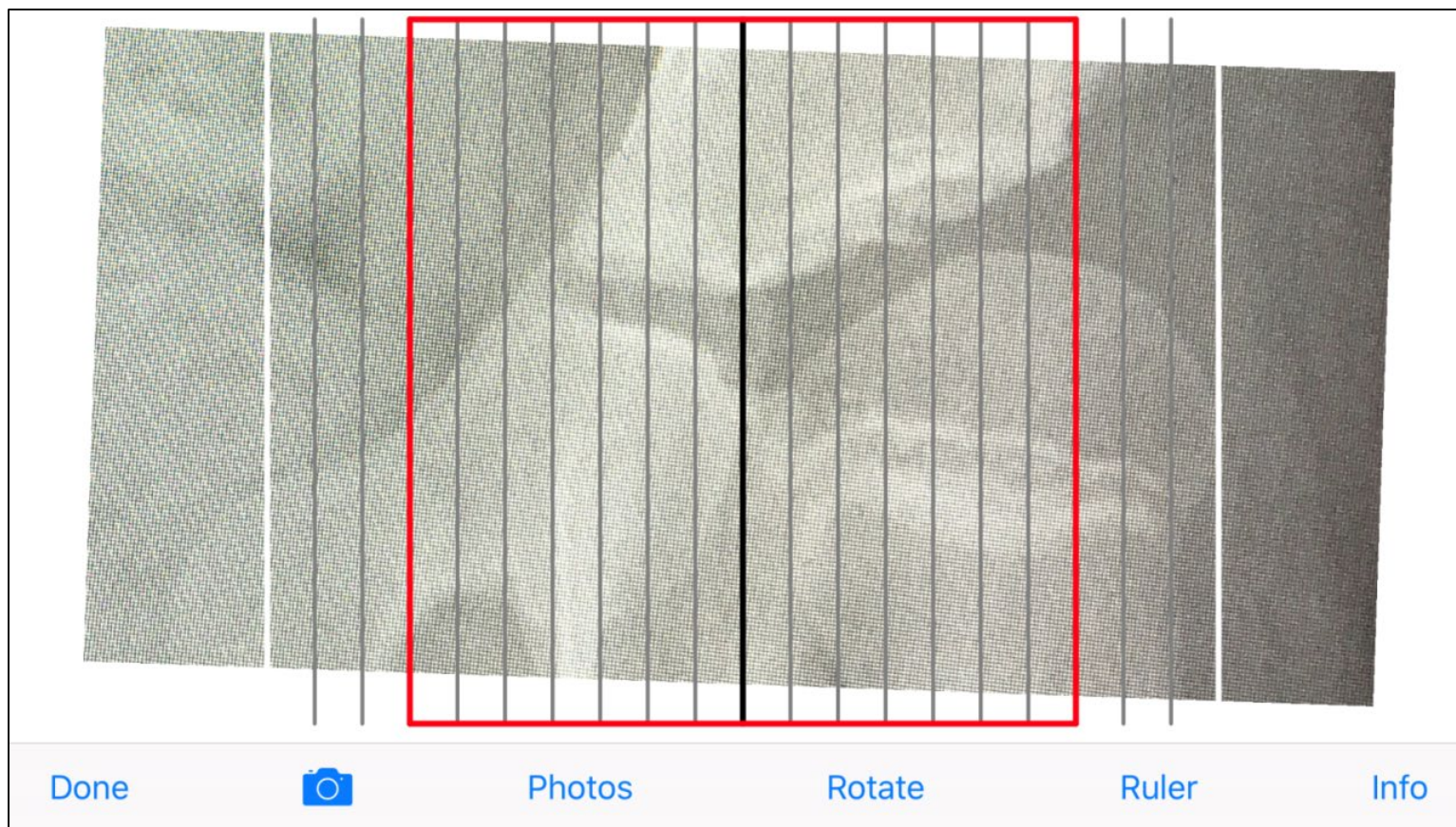
Answer: A



What is the Migration Percentage of this hip?

- A. 10%
- B. 15%
- C. 20%
- D. 30%

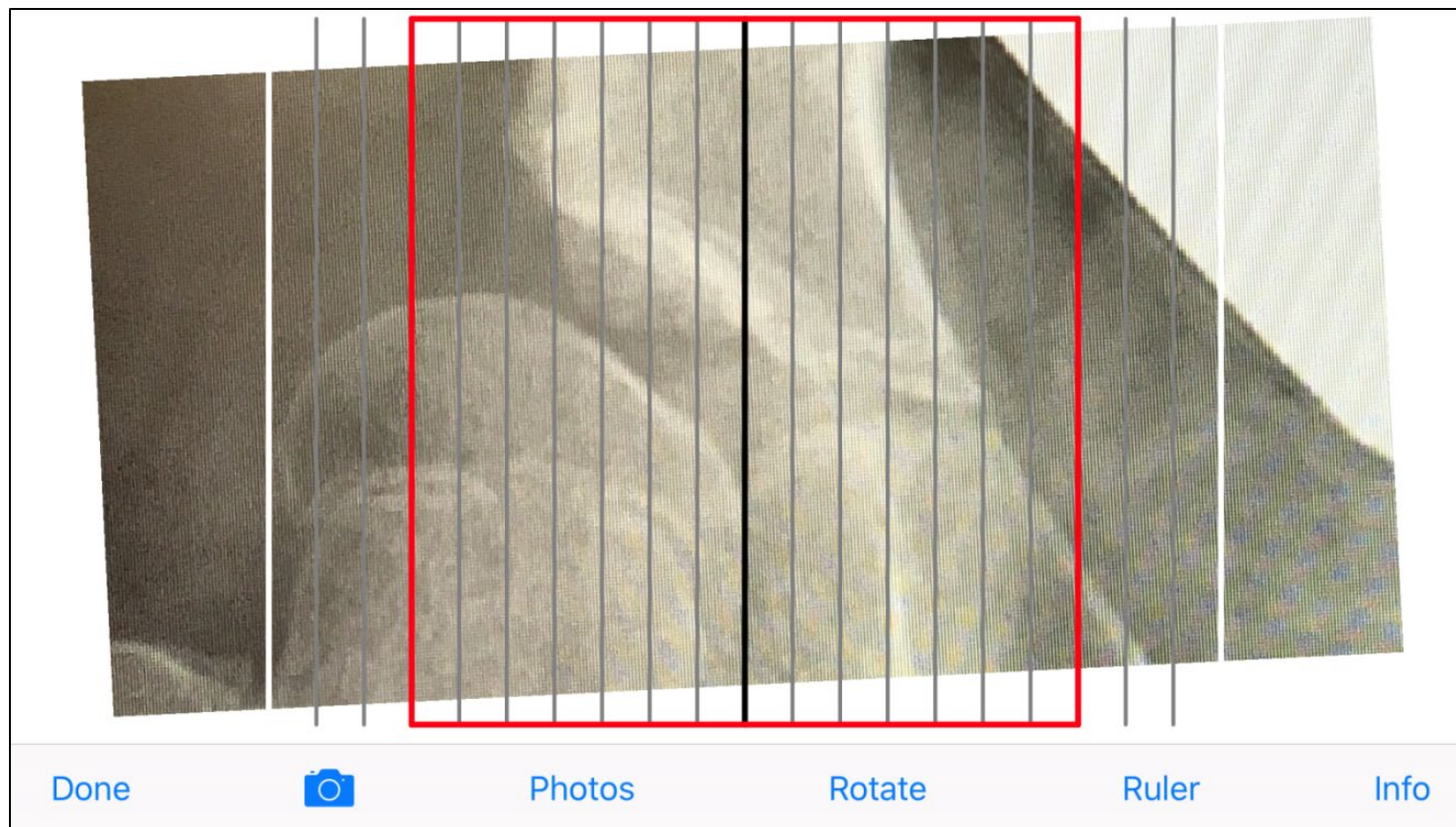
Answer: B



What is the Migration Percentage of this hip?

- A. 10%
- B. 15%
- C. 20%
- D. 30%

Answer: D



What is the Migration Percentage of this hip?

- A. 20%
- B. 30%
- C. 40%
- D. 50%

Answer: D